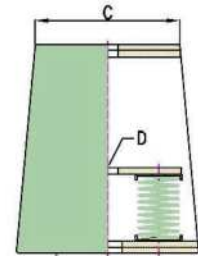
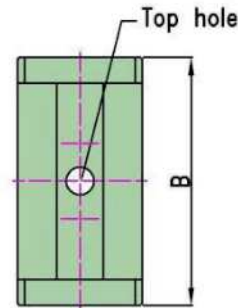
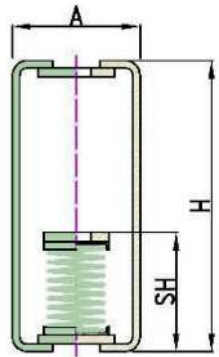


HEAVY DUTY DOUBLE SPRING HANGER

E



Applications: Designed for heavy-duty vibration isolation in large HVAC systems, including fans, AHUs, FCUs, piping, and ducting.

Double Spring System: Dual high-tensile steel springs provide enhanced load capacity and stability.

Vibration Control: Effective isolation of structure borne noise and vibrations for heavy equipment.

Spring Diameter Ratio: Diameter ratio of 0.8 ensures even load distribution and reduces lateral movement.

Rubber Housing: Encloses the springs for added damping and protection.

GI Spring Cap: Corrosion-resistant painted iron cap for durability in demanding environments.

Powder-Coated Steel Body: Protective coating resists rust and damage.

Compliance: Designed in line with BS 1726 (Part 1): 2002 standards, ensuring consistent performance under high loads.

Part No.	Color Code	Rec. Load KG	Max Deflection mm	Top Hole mm	A	B	C	D	E	H
IC209053300	Orange	300	25	32	140	280	222	32	280	320
IC209053350	Orange	350	25	32	140	280	222	32	280	320
IC20905400	Red	400	25	32	140	280	222	32	280	320
IC20905500	Purple	500	25	32	140	280	222	32	280	320
IC20905600	Grey	600	25	32	140	280	222	32	280	320
IC20905800	Red	800	25	32	140	280	222	32	280	320
IC209051000	Brown	1000	25	32	140	280	222	32	280	320
IC209051200	Black	1200	25	32	140	280	222	32	280	320
IC209051600	Red	1600	25	32	140	280	222	32	280	320
IC209052100	White	2100	25	32	140	280	222	32	280	320
IC209052500	Green	2500	25	32	140	280	222	32	280	320
IC209053000	Orange	3000	25	32	140	280	222	32	280	320