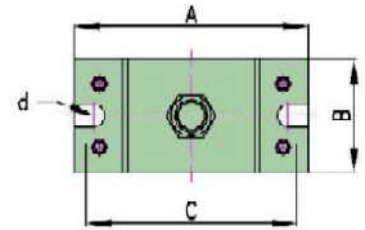
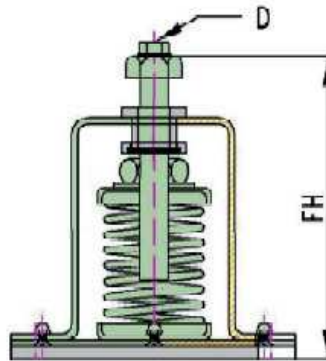


RESTRAINED SPRING MOUNT HOUSED TYPE

E



Laterally Stable Springs: Provides stability under lateral forces for reliable performance.

Non-Skid Bolt-Down Base: Ensures secure mounting, preventing slippage.

Plated Leveling/Lock Bolt: Standard, with HDG and stainless steel options available on request.

Diameter Ratio: 0.8 for effective load stability and even weight distribution.

Robust Steel Caps: Steel upper and lower caps, with an 8mm rubber base on the lower cap to enhance damping and friction.

Applications: Suitable for AHUs, Pumps, Centrifugal and Axial Fans, Inertia Bases, Internal Combustion Engines, and other equipment requiring robust vibration isolation.

Compliance: Designed in accordance with BS 1726 (Part 1): 2002 standards.

Part No.	Color Code	Rec. Load KG	Max Deflection mm	A	B	C	D	d	FH
IC20911015	Purple	15	25	140	70	112	M8	12	145
IC20911030	Yellow	30	25	140	70	112	M8	12	145
IC20911050	Blue	50	25	140	70	112	M8	12	145
IC20911060	Blue	60	25	140	70	112	M8	12	145
IC20911075	Blue	75	25	140	70	112	M8	12	145
IC20911100	Green	100	25	140	70	112	M8	12	145
IC20911150	Orange	150	25	140	70	112	M8	12	145
IC20911175	Orange	175	25	140	70	112	M8	12	145
IC20911200	Red	200	25	140	70	112	M8	12	145
IC20911250	Purple	250	25	140	70	112	M8	12	145
IC20911300	Grey	300	25	165	850	138	M10	14	170
IC20911400	Red	400	25	165	850	138	M10	14	170
IC20911500	Brown	500	25	165	850	138	M10	14	170
IC20911600	Black	600	25	165	850	138	M10	14	170
IC20911800	Red	800	25	165	850	138	M10	14	170
IC209111050	White	1050	25	165	850	138	M10	14	170
IC209111250	Green	1250	25	165	850	138	M10	14	170
IC209111500	Orange	1500	25	165	850	138	M10	14	170