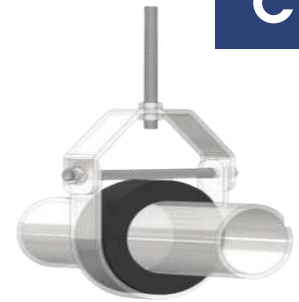


# RUBBER SUPPORT INSERTS



- Used at the supporting points of insulated pipes to prevent crushing of insulation.
  - Inherently superior to wood.
  - Dimensionally accurate as each piece is moulded.
  - Tongue and groove design.
  - Available with steel reinforcements for higher sizes.
  - Non standard widths also available.
- Excellent resistance to deterioration/distortion.

- Thermal conductivity: 0.16w/m
- Standard width
- 1/2" to 2"-25mm
- 2-1/2" to 5"-38mm
- 6" and above -50mm
- Density: 110-1400 kg/m
- Temperature Resistance-20 C to +110 C
- Designed to meet BS3974-1 :1974

## Rubber Support Insert For Copper Pipe

Pipe Size	DN	D (mm)	B	T(RSI Thickness in mm)					
				13 mm	19 mm	25 mm	32 mm	38 mm	50 mm
16	16	21.3	25	ICRS161325	ICRS161925	ICRS162525	ICRS163225	ICRS163825	ICRS165025
22	22	26.7	25	ICRS121325	ICRS121925	ICRS122525	ICRS123225	ICRS123825	ICRS125025
28	28	33.4	25	ICRS341325	ICRS341925	ICRS342525	ICRS343225	ICRS343825	ICRS345025
32	32	42.1	25	ICRS321325	ICRS321925	ICRS322525	ICRS323225	ICRS323825	ICRS325025
35	35	48.2	25	ICRS11325	ICRS11925	ICRS352525	ICRS13225	ICRS13825	ICRS15025
42	42	60.3	25	ICRS1141325	ICRS1141925	ICRS1142525	ICRS1143225	ICRS1143825	ICRS1145025
48	48	73	25	ICRS1121325	ICRS1121925	ICRS1122525	ICRS1123225	ICRS1123825	ICRS1125025
54	54	88.9	25	ICRS541325	ICRS541925	ICRS542525	ICRS543225	ICRS543825	ICRS545025
63	63	101.6	25	ICRS631325	ICRS631925	ICRS632525	ICRS633225	ICRS633825	ICRS635025
67	67	114.3	25	ICRS671325	ICRS671925	ICRS672525	ICRS673225	ICRS673825	ICRS675025
76	76	141.3	38	ICRS761338	ICRS761938	ICRS762538	ICRS763238	ICRS763838	ICRS765038
89	89	168.3	38	ICRS891338	ICRS891938	ICRS892538	ICRS893238	ICRS893838	ICRS895038
108	108	219.1	38	ICRS1081338	ICRS1081938	ICRS1082538	ICRS1083238	ICRS1083838	ICRS1085038
133	133	273	38	ICRS1331338	ICRS1331938	ICRS1332538	ICRS1333238	ICRS1333838	ICRS1335038
160	160	323.8	50	ICRS1601350	ICRS1601950	ICRS1602550	ICRS1603238	ICRS1603838	ICRS1605038

